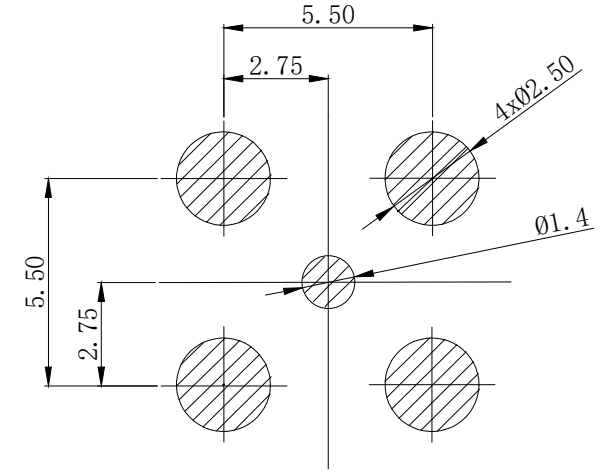
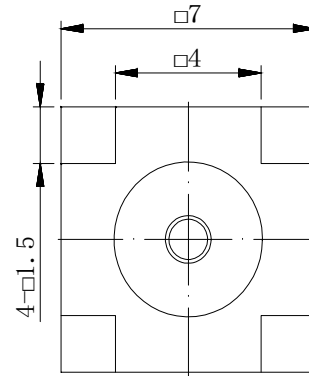
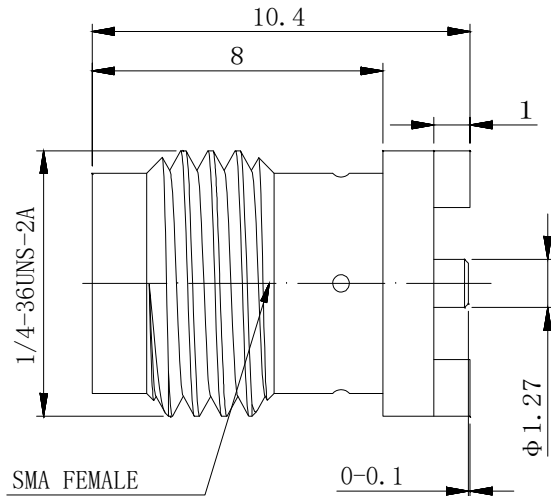




REV	DESCRIPTION	DRAWING	DATE
R1.0	First issue	Riky	2024.12.10



Recommended PCB panel size

Electrical performance

Frequency Range: DC-18 GHz

VSWR: 1.2:1 (max) to 6 GHz

Impedance 50 Ω

Insertion Loss: ≤0.05*√F(GHz) dB

Dielectric withstand voltage: 1000 V

Service life: ≥500

Insulation Resistance ≥5000MΩ

Center contact resistance: ≤3mΩ

Outer contact resistance : ≤2mΩ

Operation Temperature: -55°C ~ +165°C

Material

Inner conductor material: Beryllium bronze Gold plating

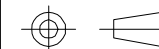
External conductor material: Brass Gold plating

Insulator: PTFE

-TOLERANCES-
UNLESS OTHERWISE
SPECIFIED



Buy From Original Factory
www.elecbee.com



PART NAME:
SMA JACK SMT MOUNT CONNECTOR

UNLESS OTHERWISE SPECIFIED
TOLERANCES FOR MILLIMETERS ARE:
0.5 - 8mm ± 0.20mm
8 - 30mm ± 0.25mm
30 -120mm ± 0.30mm

Appr:	Jim	P/N: EB-SMA-SMT-ST-F-18-048				
Check:	Jason	Date	Scale	Unit	Rev	Page
Draw:	Riky	2024.12.10	1:1	MM	R1.0	1/1