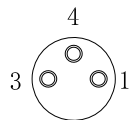
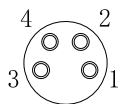




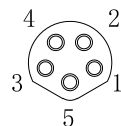
芯位排布
Core layout



A-CODE 3P



A-CODE 4P



B-CODE 5P

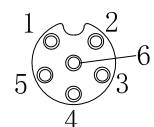
额定电压/电流
voltage/current

50V AC/60V DC
3A

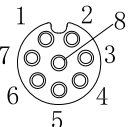
50V AC/60V DC
3A

30V /3A

芯位排布
Core layout



A-CODE 6P



A-CODE 8P

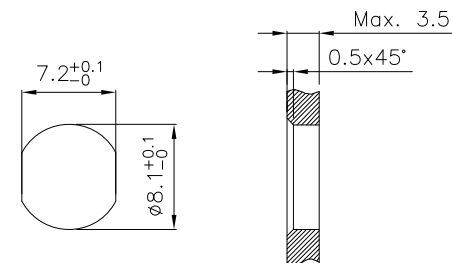
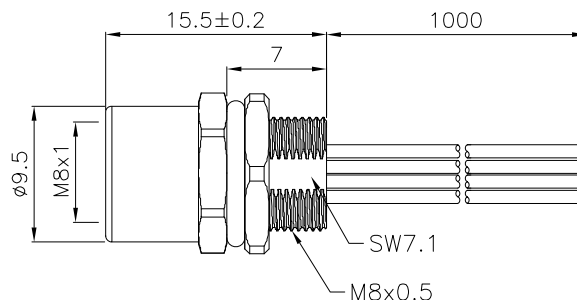
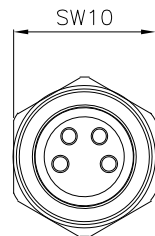
额定电压/电流
voltage/current

30V/1.5A

30V/1.5A

Pin Assignment

芯数 (PINS)	3芯 (3PIN)	4芯 (4PIN)	5芯 (5PIN)	6芯 (6PIN)	8芯 (8PIN)
芯线规格 Wire gauge	24AWG (0.25mm ²) x3C	24AWG (0.25mm ²) x4C	24AWG (0.25mm ²) x5C	26AWG (0.15mm ²) x6C	26AWG (0.15mm ²) x8C
Pin 1	棕色(Brown)	棕色(Brown)	棕色(Brown)	棕色(Brown)	白色(White)
Pin 2		白色(White)	白色(White)	白色(White)	棕色(Brown)
Pin 3	蓝色(Blue)	蓝色(Blue)	蓝色(Blue)	蓝色(Blue)	绿色(Green)
Pin 4	黑色(Black)	黑色(Black)	黑色(Black)	黑色(Black)	黄色(Yellow)
Pin 5			灰色(Grey)	灰色(Grey)	灰色(Grey)
Pin 6				粉色(Pink)	粉色(Pink)
Pin 7					蓝色(Blue)
Pin 8					红色(Red)



Recommended
Panel cut-out

Technical specifications

Insulation Resistance	100MΩ Min.
Contact Resistance	5mΩ Max.
Working Temperature	-25°C~+80°C
Protection Degree	IP67
Mating cycles	500

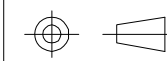
F	Seal	Rubber, Black
E	Wire	UL1007 24~26AWG
D	Nut	Brass,nickel plated
C	Contacts	Copper Alloy,AU plated
B	Insert	PA66,Black
A	Body	Brass,nickel plated
No.	PART NAME	DESCRIPTION

-TOLERANCES-
UNLESS OTHERWISE
SPECIFIED

UNLESS OTHERWISE SPECIFIED
TOLERANCES FOR MILLIMETERS ARE:
0.5 - 8mm ± 0.20mm
8 - 30mm ± 0.25mm
30 - 120mm ± 0.30mm



Buy From Original Factory
www.elecbee.com



PART DESCRIPTION:
M8 Female Back Mount With Cable 8PIN

Appr:	Jim	P/N: EB-400-1123			
Check:	Jason	Date	Scale	Unit	Rev
Draw:	Riky	2024.03.18	1:1	MM	R1.0
					Page
					1/1