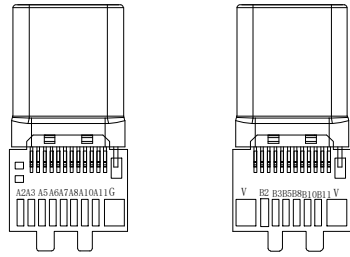
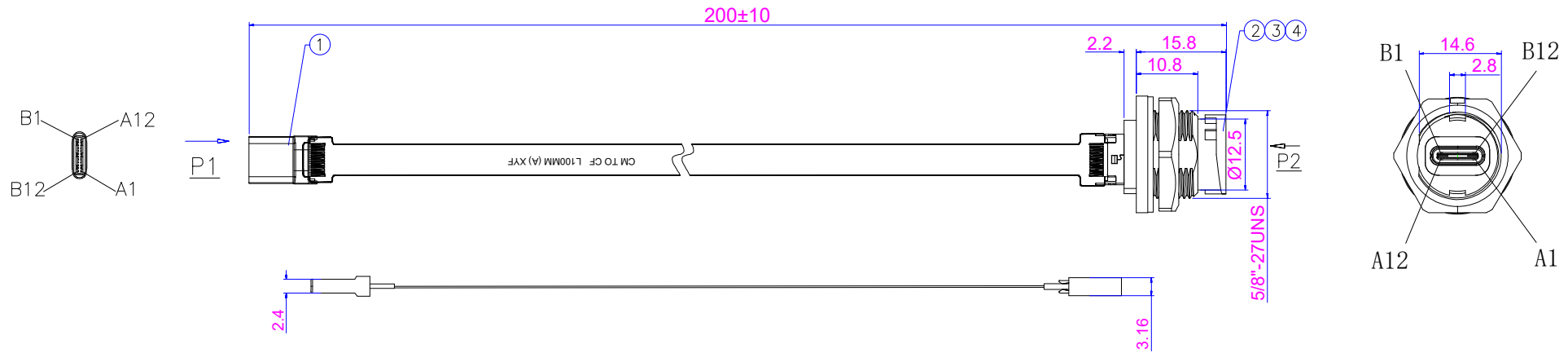


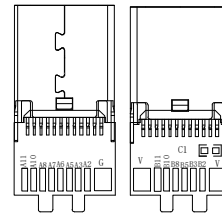


REV	DESCRIPTION	DRAWING	DATE
R1.0	First issue	Xiong	2024.12.09

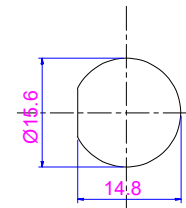


TYPE C3.1 MALE

Pin Assignment 接线定义	
P1	P2
A4	A4
A9	A9
B4	B4
B9	B9
A1	A1
A12	A12
B1	B1
B12	B12
外壳	外壳
B5	B5
A5	A5
A6	A6
A7	A7
A8	A8
B8	B8
B2	B2
B3	B3
A2	A2
A3	A3
B10	B10
B11	B11
B2	B2
B3	B3
A10	A10
A11	A11



TYPE C3.1 FEMALE



Recommended Panel cut-out

NOTES:
 1. CONTACT RESISTANCE: 30mΩ MAX.
 2. INSULATION RESISTANCE: 100MΩ MIN. AT 500VDC
 3. Protection Degree: IP67
 4. OPERATING TEMPERATURE : -40℃~80℃

No.	Specification	Unit	Q'ty
4	塑胶六角螺母5/8"-27	pc	1
3	硅橡胶防水垫圈	pc	1
2	卡扣式板后TYPE C 母座外壳	pc	1
1	TYPE C公头转TYPE C母头, 通过FPC软板连接, L=200mm	pc	1

-TOLERANCES-
UNLESS OTHERWISE
SPECIFIED

UNLESS OTHERWISE SPECIFIED
TOLERANCES FOR MILLIMETERS ARE:
 0.5 - 8mm ± 0.20mm
 8 - 30mm ± 0.25mm
 30 -120mm ± 0.30mm

Buy From Original Factory
www.elecbee.com

PART NAME: USB Type C Female Panel Mount Receptacle to Male with 20cm FPC Cable		P/N: EB-504-4027-H			
Appr: Jim	Date	Scale	Unit	Rev	Page
Check: Jason	2024.12.10	1:1	MM	R1.0	1/1
Draw: Xiong					