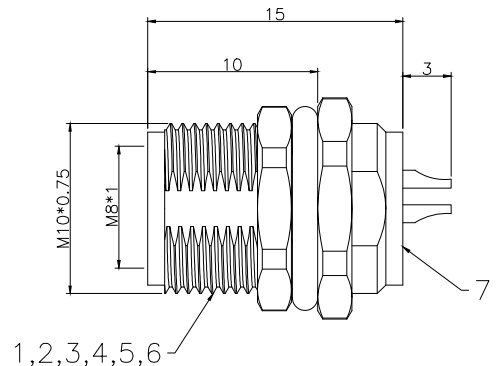
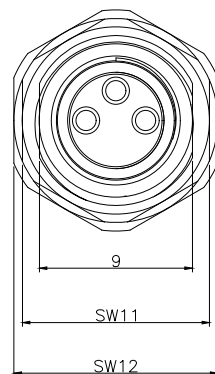
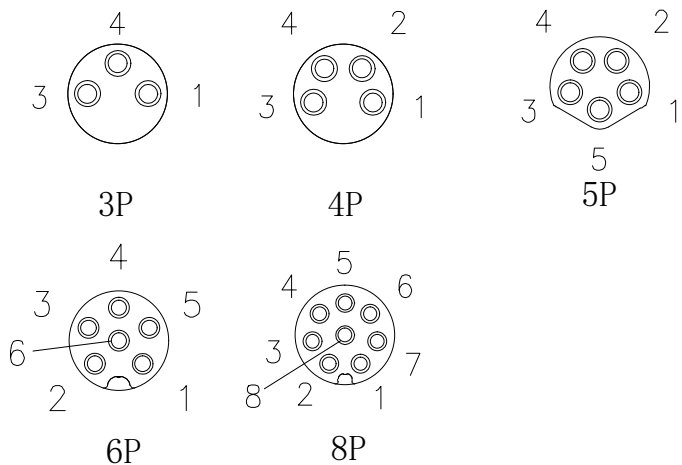


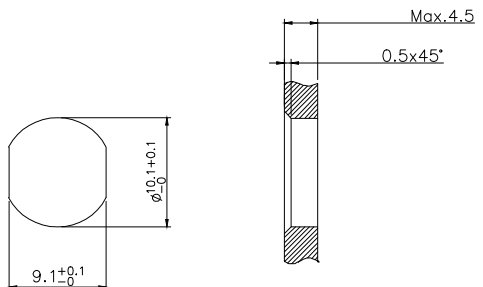


Pin Layout



Technical specifications:

- Rated voltage/current:
 - 3P 60V/3A
 - 4P 60V/3A
 - 5P 30V/3A
 - 6P 30V/1.5A
 - 8P 30V/1.5A
- Degree of protection: IP67
- Temperature range: -25°C ~ +80°C
- Mating cycles: /500
- Contact resistance: *5mΩ



Recommended Panel cut-out

7	Epoxy resin	Black	1
6	O-Ring	FKM, Black	1
5	Nut	Brass; Nickel plated	1
4	Body	M8 female Shell, Brass; Nickel plated	1
3	O-Ring	FKM, GREEN	1
2	Housing	M8 3Pin female A-Coding, PA66, Black	1
1	Pin	Brass; Gold-plated	3
No.	PART NAME	DESCRIPTION	Q' TY

-TOLERANCES- UNLESS OTHERWISE SPECIFIED	Buy From Original Factory www.elecbee.com	
	PART NAME: M8 Connector 6 Pin Female Socket Panel Mount Solder Cup	
UNLESS OTHERWISE SPECIFIED TOLERANCES FOR MILLIMETERS ARE: 0.5 - 8mm ± 0.20mm 8 - 30mm ± 0.25mm 30 - 120mm ± 0.30mm	Appr: Jim Check: Jason Draw: Ricky	P/N: EB-400-1182 Date: 2024. 12. 10 Scale: 1:1 Unit: MM Rev: R1.0 Page: 1/1